



### Installation Instructions

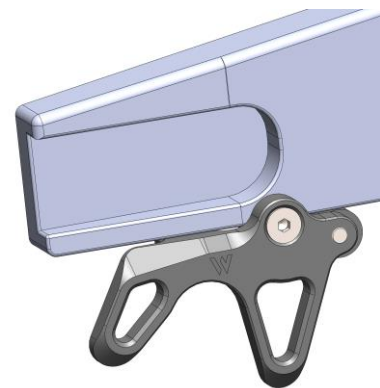
27-0448B Yamaha R6 2006-2016 Superbike Lifter Hooks

**IMPORTANT - USE BLUE THREADLOCKING COMPOUND on all mounting bolts in these assemblies.**

#### Without Optional Slider Pucks

1) Bolt the Hook to the swingarm using the 6x20mm Flat Head Countersunk Bolt in the location shown at the right.

2) Attach the eccentric spacer to the back side of the hook using the supplied 6x25mm button head bolt. As you tighten the bolt, **both** the eccentric spacer and the machined stop on the back side of the hook should be seated firmly against the swingarm.

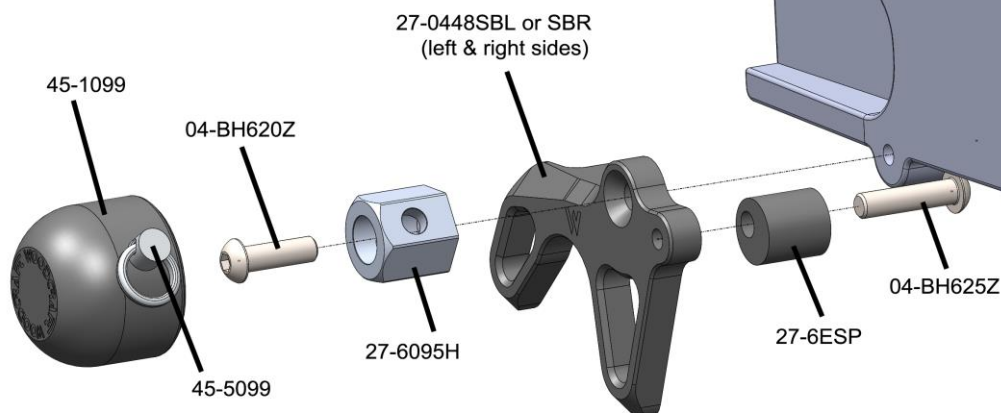
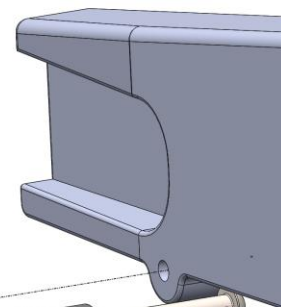


#### With Optional Slider Puck Set (27-5699)

1) Bolt the Hook to the swingarm using the 6x20mm Button Head Bolt in the location shown below. The bolt should first pass through the 27-6095H Hex Spacer and then the 27-0448 Hook.

2) Attach the eccentric spacer to the back side of the hook as described in step 2 above.

3) Install the 45-1099 puck on the hex spacer using the 45-5099 quick release pin.



**WARNING: Improper installation and/or failure to comply with all warnings and instructions may cause a loss of control and serious injury or death. The motorcycle should be run and thoroughly inspected before use. DO NOT INSTALL OR USE THIS PRODUCT IF YOU ARE UNABLE TO DO SO IN COMPLIANCE WITH ALL INSTRUCTIONS AND WARNINGS. ALWAYS SEEK THE ASSISTANCE OF A TRAINED PROFESSIONAL TECHNICIAN.**